

Cystatin C Rabbit mAb

Catalog No: #59201



Package Size: #59201-1 50ul #59201-2 100ul

Orders: order@signalwayantibody.com

Support: tech@signalwayantibody.com

Description

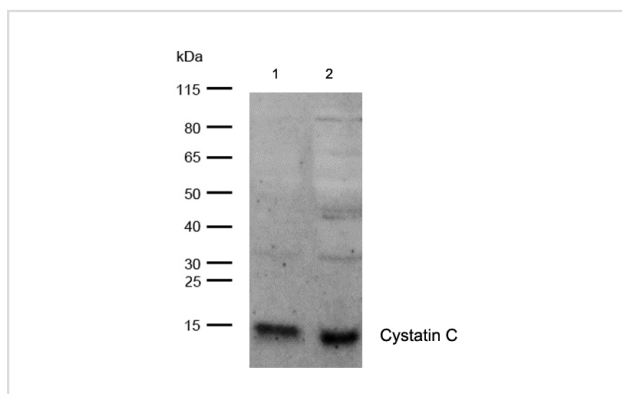
Product Name	Cystatin C Rabbit mAb
Host Species	Rabbit
Clonality	Monoclonal
Isotype	Rabbit IgG
Purification	Affinity-chromatography
Applications	WB;IHC
Species Reactivity	Human Mouse Rat
Specificity	Cystatin C Antibody detects endogenous levels of total Cystatin C
Conjugates	Unconjugated
Other Names	ARMD11; CST3; AD8; CystatinC; HCCAA; Cystatin3;
Accession No.	P01034
Calculated MW	16 kDa
SDS-PAGE MW	14 kDa
Formulation	Rabbit IgG in phosphate buffered saline , pH 7.4, 150mM NaCl, 0.02% sodium azide and 50% glycerol.
Storage	Store at +4°C short term. Store at -20°C long term. Avoid freeze / thaw cycle.

Application Details

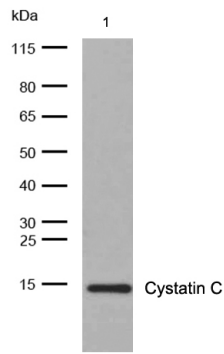
WB: 1:500-1:2000

IHC: 1:50-1:200

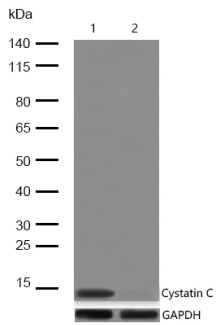
Images



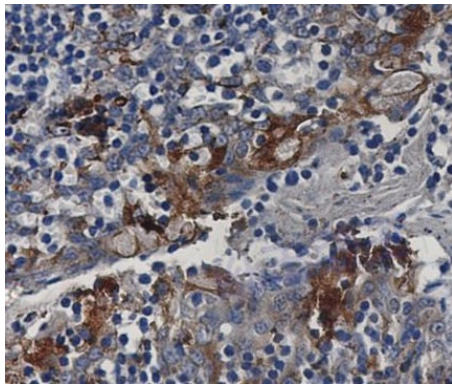
All lanes: Cystatin C Rabbit mAb at 1/1k dilution
 Lane 1 : HepG2 whole cell lysates
 Lane 2 : MCF-7 whole cell lysates
 Lysates/proteins at 20 µg per lane.
 Secondary All lanes : Goat Anti-Rabbit IgG H&L (HRP) at 1/20000 dilution
 Predicted band size: 16 kDa
 Observed band size: 14 kDa
 Exposure time: 9 seconds



All lanes: Cystatin C Rabbit mAb at 1/1k dilution
 Lane 1 : HeLa cell lysates Lysates/proteins at 20 µg per lane. Secondary All lanes : Goat Anti-Rabbit IgG H&L (HRP) at 1/20000 dilution
 Predicted band size: 16 kDa Observed band size: 14 kDa
 Exposure time: 6 seconds



All lanes: Cystatin C Rabbit mAb at 1/1k dilution
 Lane 1 : Wild-type HAP1 cell lysate
 Lane 2 : Cystatin C Rabbit mAb knockdown HAP1 cell lysate
 Lysates/proteins at 20 µg per lane.



Formalin-fixed, paraffin-embedded human tonsil tissue stained for Cystatin C using 59201 at 1/100 dilution in immunohistochemical analysis.

Note: This product is for in vitro research use only and is not intended for use in humans or animals.