

E2F1 Rabbit mAb

Catalog No: #59208



Package Size: #59208-1 50ul #59208-2 100ul

Orders: order@signalwayantibody.com

Support: tech@signalwayantibody.com

Description

Product Name	E2F1 Rabbit mAb
Host Species	Rabbit
Clonality	Monoclonal
Isotype	Rabbit IgG
Purification	Affinity-chromatography
Applications	WB;IHC;ICC/IF
Species Reactivity	Human Mouse Rat
Specificity	E2F1 Antibody detects endogenous levels of total E2F1
Conjugates	Unconjugated
Other Names	E2F-1; PBR3; PRB-binding protein E2F-1; RBAP-1; RBBP-3; RBBP3;
Accession No.	Q01094
Calculated MW	47 kDa
SDS-PAGE MW	65 kDa
Formulation	Rabbit IgG in phosphate buffered saline , pH 7.4, 150mM NaCl, 0.02% sodium azide and 50% glycerol.
Storage	Store at +4°C short term. Store at -20°C long term. Avoid freeze / thaw cycle.

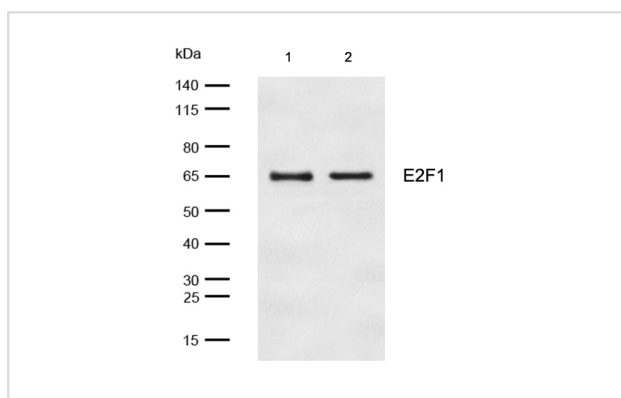
Application Details

WB: 1:500-1:2000

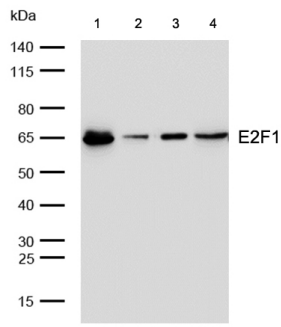
IHC: 1:50-1:200

ICC/IF: 1:50-1:200

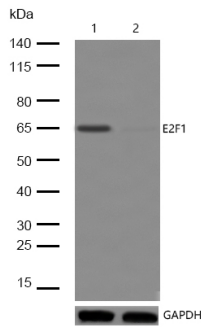
Images



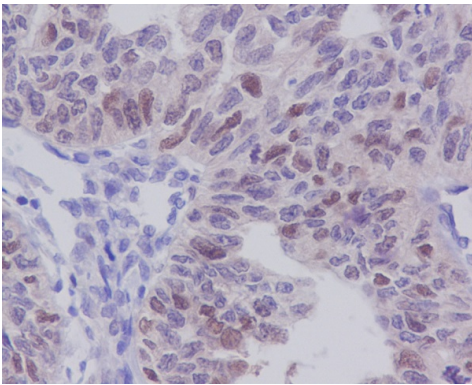
All lanes: E2F1 Rabbit mAb at 1/1k dilution
 Lane 1 : HeLa whole cell lysates
 Lane 2 : 3T3 whole cell lysates
 Lysates/proteins at 20 µg per lane.
 Secondary All lanes : Goat Anti-Rabbit IgG H&L (HRP) at 1/20000 dilution
 Predicted band size: 47 kDa
 Observed band size: 65 kDa
 Exposure time: 6 seconds



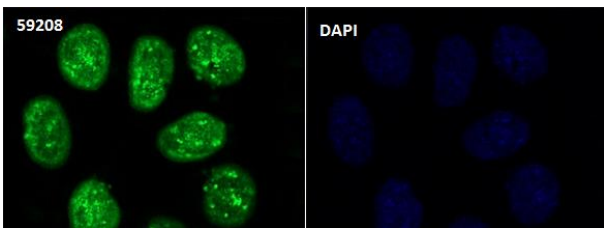
All lanes: E2F1 Rabbit mAb at 1/1k dilution
 Lane 1 : Mouse lung lysates
 Lane 2 : Mouse heart lysates
 Lane 3 : Rat heart lysates
 Lane 4 : Rat liver lysates
 Lysates/proteins at 20 µg per lane.
 Secondary All lanes : Goat Anti-Rabbit IgG H&L (HRP) at 1/20000 dilution
 Predicted band size: 47 kDa
 Observed band size: 65 kDa
 Exposure time: 5 seconds



All lanes: E2F1 Rabbit mAb at 1/1k dilution
 Lane 1 : Wild-type HeLa cell lysate
 Lane 2 : E2F1 Rabbit mAb knockdown HeLa cell lysate
 Lysates/proteins at 20 µg per lane.



Formalin-fixed, paraffin-embedded human ovary carcinoma tissue stained for E2F1 using 59208 at 1/100 dilution in immunohistochemical analysis.



Immunocytochemistry/ Immunofluorescence E2F1 antibody (59208)
 ICC/IF staining of E2F1 in HeLa cells. Cells were fixed with 4% Paraformaldehyde permeabilized with 0.1% Triton X-100.

Samples were incubated with 59208 at a working dilution of 1/100. The secondary antibody was Alexa FluorB 488 goat anti rabbit, used at a dilution of 1/500.

Nuclei were counterstained with DAPI.

Note: This product is for in vitro research use only and is not intended for use in humans or animals.