

LEF-1 Rabbit mAb

Catalog No: #60913



Package Size: #60913-1 50ul #60913-2 100ul

Orders: order@signalwayantibody.comSupport: tech@signalwayantibody.com

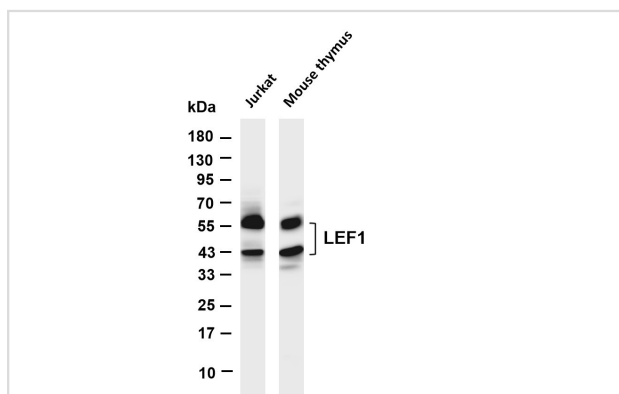
Description

Product Name	LEF-1 Rabbit mAb
Host Species	Rabbit
Clonality	Monoclonal
Isotype	IgG,Kappa
Purification	Protein A
Applications	WB;IHC;IF;IP;ELISA
Species Reactivity	Human;Mouse;Rat
Specificity	Endogenous
Conjugates	Unconjugated
Target Name	LEF1
Other Names	LEF1 ; Lymphoid enhancer-binding factor 1 ; LEF-1 ; T cell-specific transcription factor 1-alpha ; TCF1-alpha
Accession No.	Q9UJU2
Calculated MW	44kDa
SDS-PAGE MW	45-60kDa
Formulation	PBS, 50% glycerol, 0.05% Proclin 300, 0.05%BSA
Storage	Store at -20°C/1 year

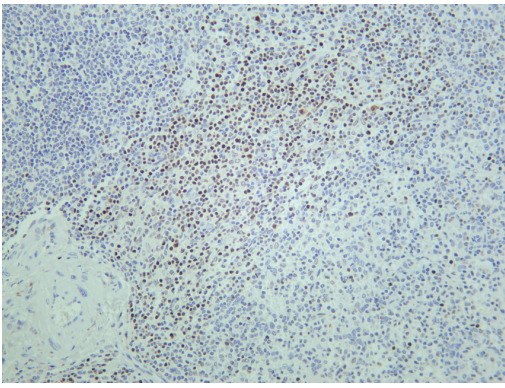
Application Details

WB 1:2000-1:10000; IHC 1:1000-1:4000; IF 1:200-1:1000; ELISA 1:5000-1:20000; IP 1:50-1:200;

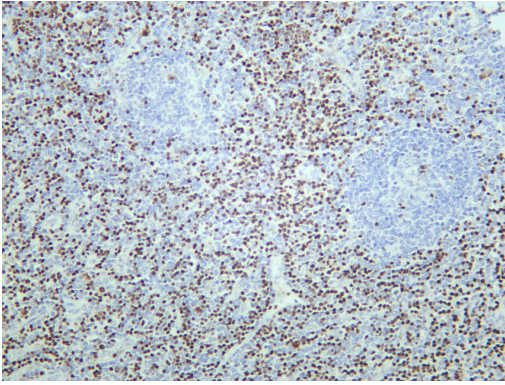
Images



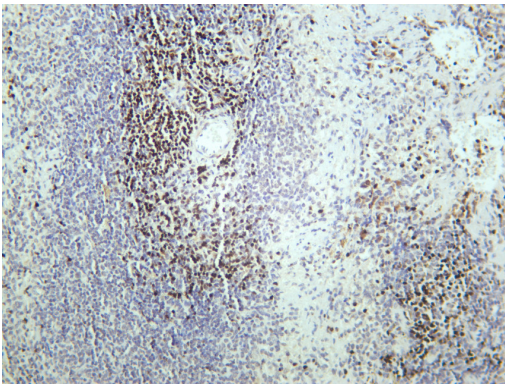
Various whole cell lysates were separated by 4-20% SDS-PAGE, and the membrane was blotted with anti-LEF1 antibody.



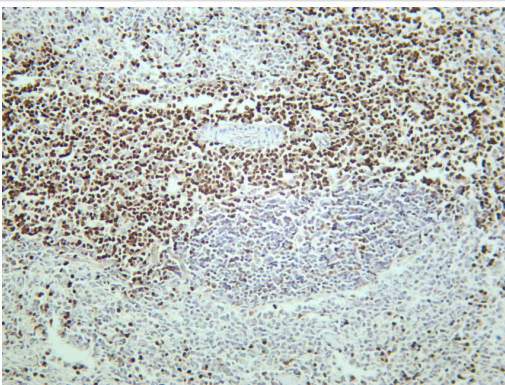
Human spleen was stained with anti-LEF1 rabbit antibody



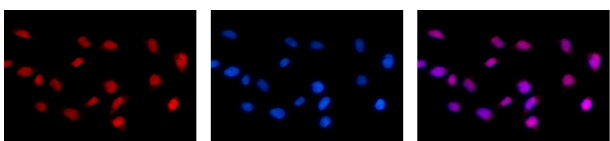
Human tonsil was stained with anti-LEF1 rabbit antibody



Mouse spleen was stained with anti-LEF1 rabbit antibody



Rat spleen was stained with anti-LEF1 rabbit antibody



Immunofluorescence analysis of HEK293. Picture A: LEF1 antibody (red). Picture B: DAPI (blue). Picture C: Merge of A+B

Note: This product is for in vitro research use only and is not intended for use in humans or animals.