

## GFP/eGFP-Tag Rabbit mAb

Catalog No: #60916



Package Size: #60916-1 50ul #60916-2 100ul

Orders: order@signalwayantibody.com

Support: tech@signalwayantibody.com

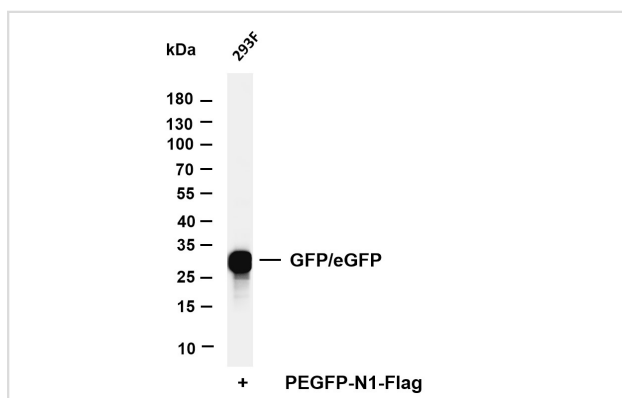
## Description

Product Name	GFP/eGFP-Tag Rabbit mAb
Host Species	Rabbit
Clonality	Monoclonal
Isotype	IgG,Kappa
Purification	Recombinant Antibody expressed in animal component-free (ACF) media, purified via Protein A affinity chromatography.
Applications	WB;IF;ELISA
Species Reactivity	Species independent
Specificity	The antibody can detect GFP-Tag fusion proteins.
Conjugates	Unconjugated
Target Name	GFP-Tag
Formulation	PBS, 50% glycerol, 0.05% Proclin 300, 0.05%BSA
Storage	Store at -20°C/1 year

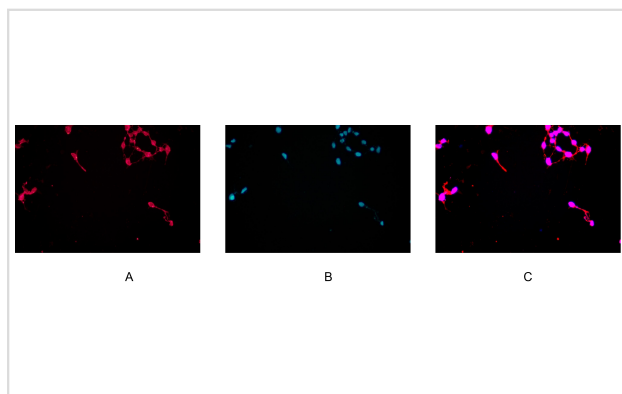
## Application Details

WB 1:5000-1:20000; IF 1:200-1:1000; ELISA 1:5000-1:20000;

## Images



Various whole cell lysates were separated by 4-20% SDS-PAGE, and the membrane was blotted with anti-GFP/eGFP antibody.



Immunofluorescence analysis of GFP-transfected HEK293. Picture A: GFP/eGFP-Tag antibody (red). Picture B: DAPI (blue). Picture C: Merge of A+B

---

Note: This product is for in vitro research use only and is not intended for use in humans or animals.