

## EGFP-tag Antibody

Catalog No: #62163



Package Size: #62163-1 50ul #62163-2 100ul

Orders: order@signalwayantibody.com

Support: tech@signalwayantibody.com

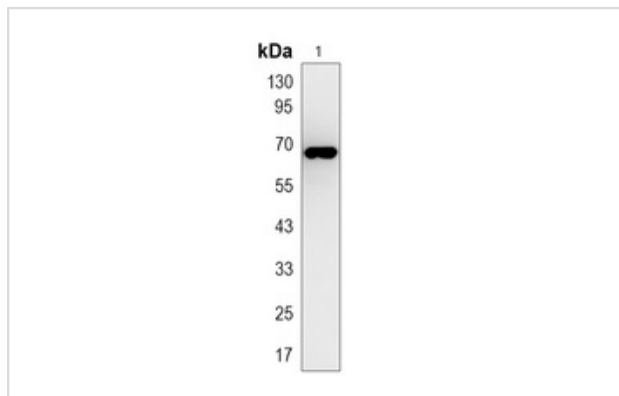
## Description

Product Name	EGFP-tag Antibody
Host Species	Mouse
Clonality	Monoclonal
Purification	The antibody was purified by immunogen affinity chromatography.
Applications	WB;IF/ICC;IP
Specificity	The antibody detects endogenous level of total EGFP-tag protein.
Immunogen Description	Recombinant protein corresponding to EGFP-tag.
Conjugates	Unconjugated
Formulation	Liquid in 0.42% Potassium phosphate, 0.87% Sodium chloride, pH 7.3, 30% glycerol, and 0.01% sodium azide.
Storage	Shipped at 4°C. Store at -20°C for one year. Avoid repeated freeze/thaw cycles.

## Application Details

WB 1:2000 - 1:5000; IF/ICC 1:200 - 1:500; IP 1:100 - 1:200

## Images



All lanes : EGFP-tag Antibody at 1/2K dilution  
 Lane 1 : over-expressed EGFP-tagged protein in 293T cell lysate  
 Lysates/proteins at 20 ug per lane.  
 Secondary All lanes : Goat Anti-Mouse IgG H&L (HRP) at 1/20000 dilution  
 Exposure time: 10 seconds

Note: This product is for in vitro research use only and is not intended for use in humans or animals.