

CD31 Rabbit mAb

Catalog No: #62240



Package Size: #62240-1 50ul #62240-2 100ul

Orders: order@signalwayantibody.comSupport: tech@signalwayantibody.com

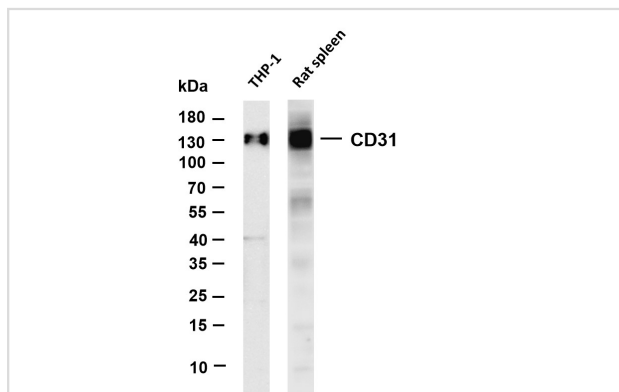
Description

Product Name	CD31 Rabbit mAb
Host Species	Rabbit
Clonality	Monoclonal
Isotype	IgG,Kappa
Purification	Protein A
Applications	WB;IHC;IF;IP;ELISA
Species Reactivity	Human;Mouse;Rat
Specificity	Endogenous
Conjugates	Unconjugated
Target Name	PECAM1
Other Names	Platelet endothelial cell adhesion molecule ; PECAM-1 ; EndoCAM ; GPIIA' ; PECA1 ; CD antigen CD31
Accession No.	P16284
Calculated MW	81kDa
SDS-PAGE MW	130kDa
Formulation	PBS, 50% glycerol, 0.05% Proclin 300, 0.05%BSA
Storage	Store at -20°C/1 year

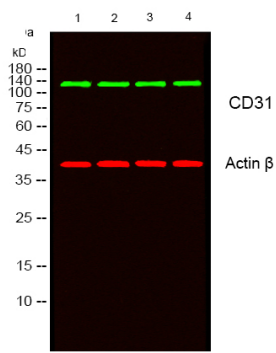
Application Details

IHC 1:1000-1:2000; WB 1:1000-1:5000; IF 1:200-1:1000; ELISA 1:5000-1:20000; IP 1:50-1:200

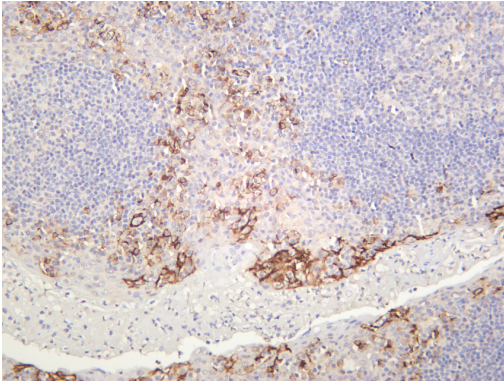
Images



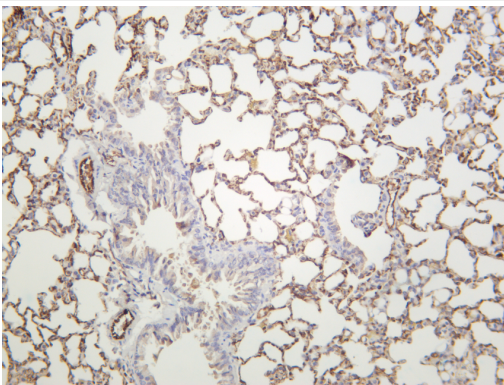
Various whole cell lysates were separated by 4-20% SDS-PAGE, and the membrane was blotted with anti-CD31 antibody. The HRP-conjugated Goat anti-Rabbit IgG(H + L) antibody was used to detect the antibody.



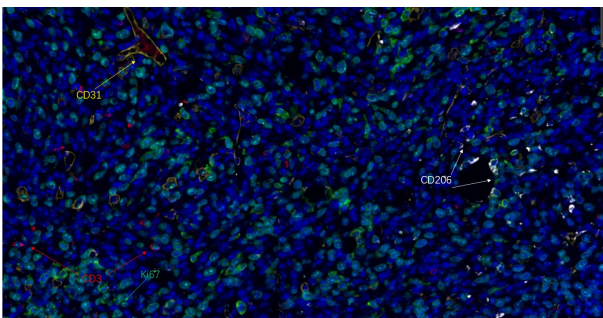
Western blot analysis of lysates from 1) HepG2, 2) K562,3) L929,4) MOUSE-BRAIN cells



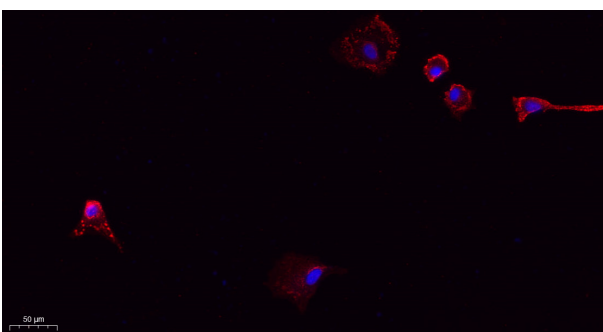
Human tonsil was stained with anti-CD31 rabbit antibody



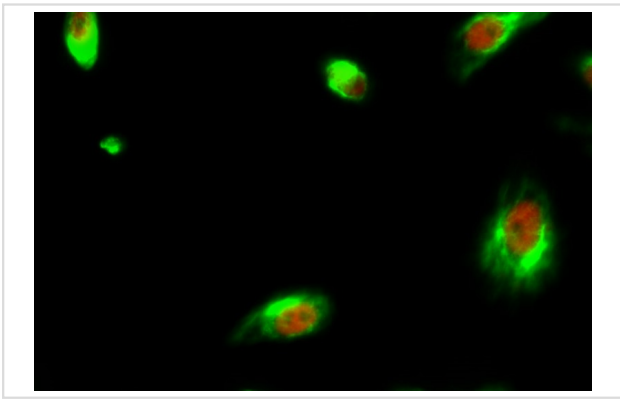
Mouse lung was stained with anti-CD31 rabbit antibody



Fluorescence multiplex immunohistochemical analysis of β human tonsil tissue (formalin-fixed paraffin-embedded section).



Immunofluorescence analysis of A549.



Immunofluorescence analysis of HeLa cell.

Published Papers

Yanran Wang et al., Rapid and solvent-free, 2-hydroxyethyl methacrylate (HEMA)-acrylamide (AAm) copolymer-based optical clearing of tissue for fluorescent imaging, *Bio-protocol*, (2025)

[PMID:41306578](#)

Note: This product is for in vitro research use only and is not intended for use in humans or animals.