

Ku-70 (Acetyl-Lys331) Polyclonal Antibody

Catalog No: #HW129

Package Size: #HW129-1 50ul #HW129-2 100ul

Orders: order@signalwayantibody.comSupport: tech@signalwayantibody.com

Description

Product Name	Ku-70 (Acetyl-Lys331) Polyclonal Antibody
Host Species	Rabbit
Clonality	Polyclonal
Purification	The antibody was affinity-purified from rabbit antiserum by affinity-chromatography using epitope-specific immunogen.
Applications	WB ELISA
Species Reactivity	Human;Mouse;Rat
Specificity	Acetyl-Ku-70 (K331) Polyclonal Antibody detects endogenous levels of Ku-70 protein only when acetylated at K331.
Immunogen Type	peptide
Immunogen Description	Synthesized peptide derived from human Ku-70 around the acetylation site of K331.
Conjugates	Unconjugated
Target Name	Ku-70
Modification	Acetyl
Other Names	XRCC6; G22P1; X-ray repair cross-complementing protein 6; 5'-deoxyribose-5-phosphate lyase Ku70; 5'-dRP lyase Ku70; 70 kDa subunit of Ku antigen; ATP-dependent DNA helicase 2 subunit 1; ATP-dependent DNA helicase II 70 kDa subunit;
Accession No.	Swiss-Prot: P12956NCBI Gene ID: 2547
Target Species	human
SDS-PAGE MW	70kd
Concentration	1mg/ml
Formulation	Liquid in PBS containing 50% glycerol, 0.5% BSA and 0.02% sodium azide.
Storage	Store at -20°C/1 year

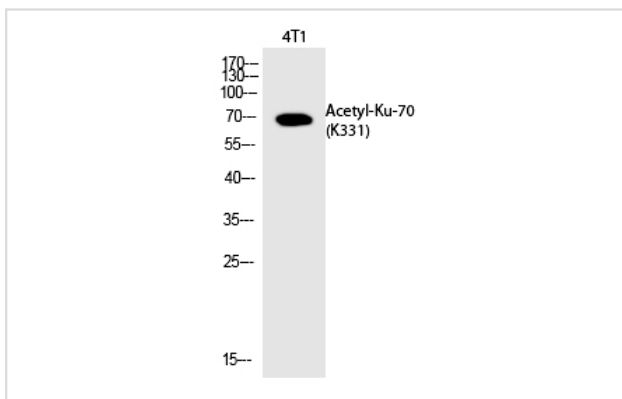
Application Details

Western blotting: 1/500 - 1/2000

ELISA: 1/20000

Not yet tested in other applications

Images



Western Blot analysis of 4T1 cells using Acetyl-Ku-70 (K331)
Polyclonal Antibody

Note: This product is for in vitro research use only and is not intended for use in humans or animals.