

## PCAF (Acetyl-Lys428) Polyclonal Antibody

Catalog No: #HW138



Package Size: #HW138-1 50ul #HW138-2 100ul

Orders: [order@signalwayantibody.com](mailto:order@signalwayantibody.com)Support: [tech@signalwayantibody.com](mailto:tech@signalwayantibody.com)

## Description

Product Name	PCAF (Acetyl-Lys428) Polyclonal Antibody
Host Species	Rabbit
Clonality	Polyclonal
Purification	The antibody was affinity-purified from rabbit antiserum by affinity-chromatography using epitope-specific immunogen.
Applications	WB ELISA
Species Reactivity	Human;Mouse
Specificity	Acetyl-PCAF (K428) Polyclonal AntibodySynthesized peptide derived from the human PCAF around the acetylation site of K428.
Immunogen Type	peptide
Immunogen Description	Synthesized peptide derived from the human PCAF around the acetylation site of K428.
Conjugates	Unconjugated
Target Name	PCAF
Modification	Acetyl
Other Names	KAT2B; PCAF; Histone acetyltransferase KAT2B; Histone acetyltransferase PCAF; Histone acetylase PCAF; Lysine acetyltransferase 2B; P300/CBP-associated factor; P/CAF
Accession No.	Swiss-Prot: Q92831NCBI Gene ID: 8850
Target Species	human
SDS-PAGE MW	93kd
Concentration	1mg/ml
Formulation	Liquid in PBS containing 50% glycerol, 0.5% BSA and 0.02% sodium azide.
Storage	Store at -20°C/1 year

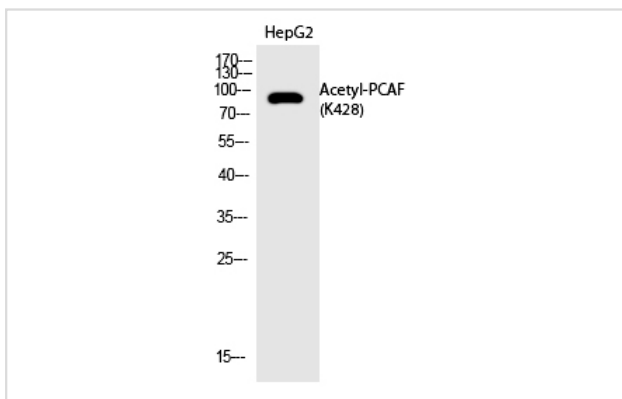
## Application Details

Western blotting: 1/500 - 1/2000

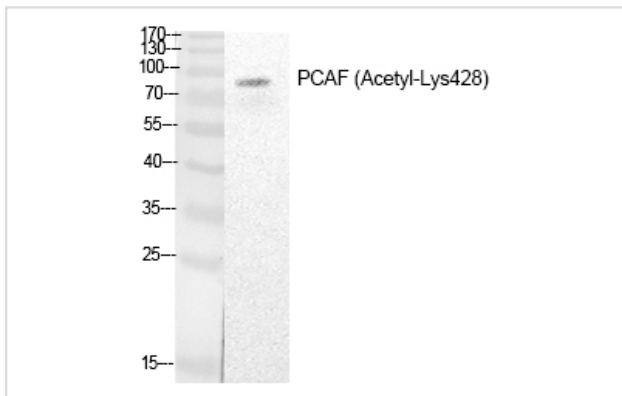
ELISA: 1/20000

Not yet tested in other applications

## Images



Western Blot analysis of HepG2 cells using Acetyl-PCAF (K428) Polyclonal Antibody



Western Blot analysis of HepG2 cells using PCAF (Acetyl-Lys428) Polyclonal Antibody

---

Note: This product is for in vitro research use only and is not intended for use in humans or animals.